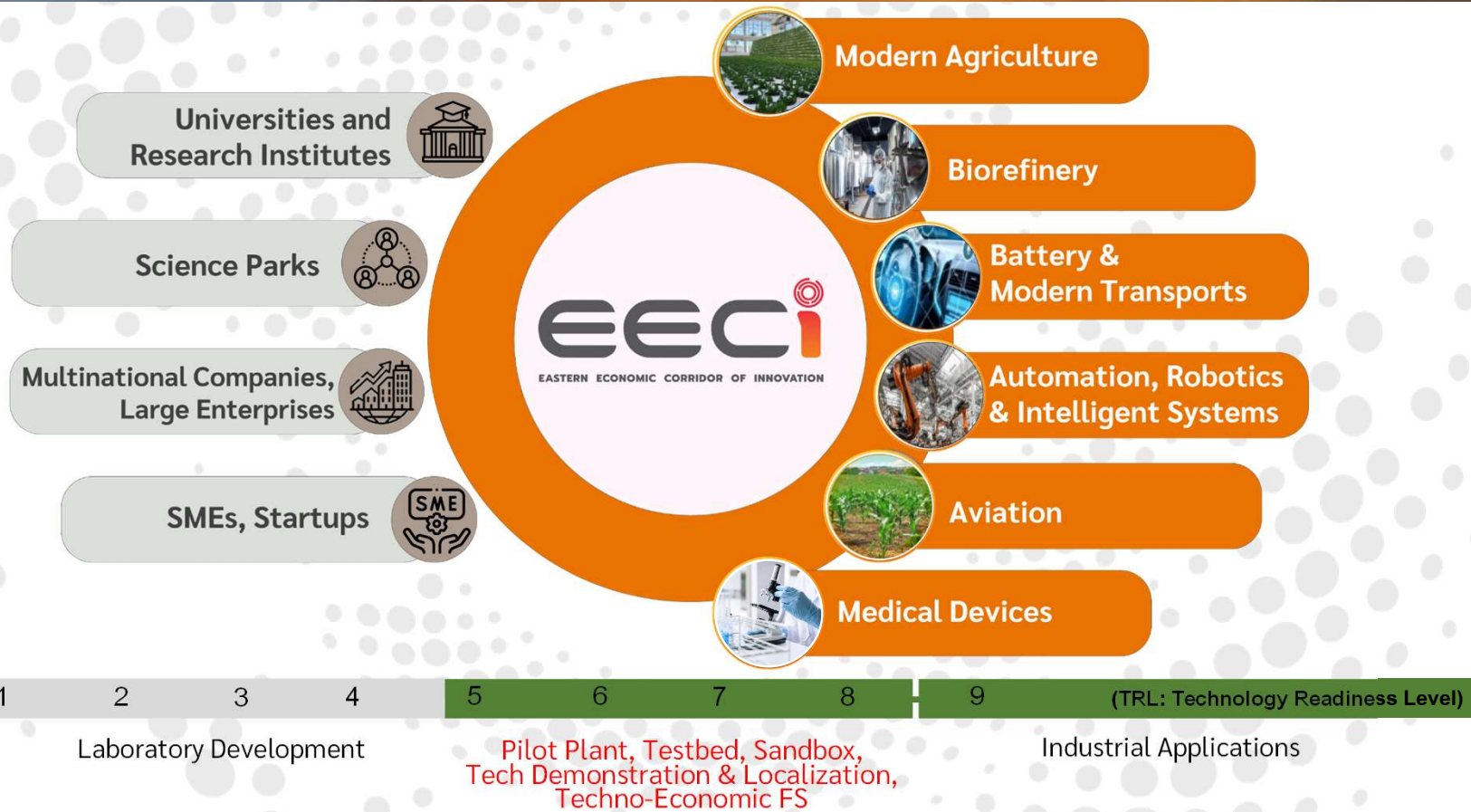
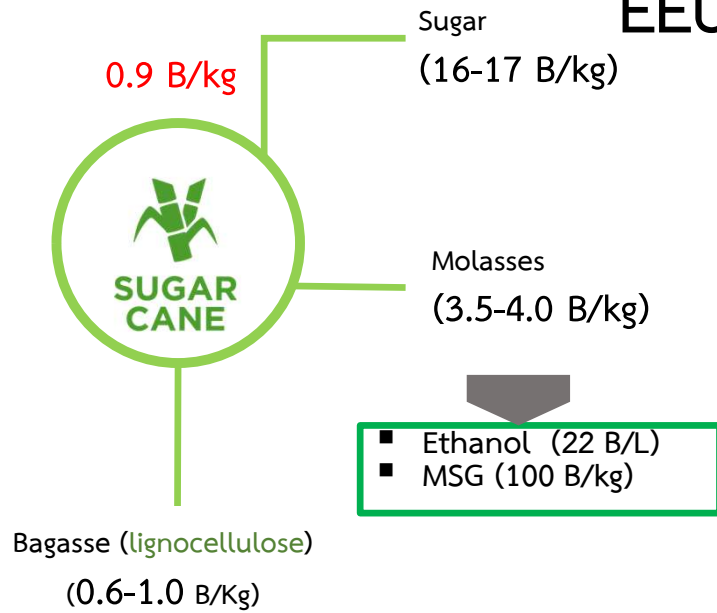


# EECI: An Engine for Future Economic Growth

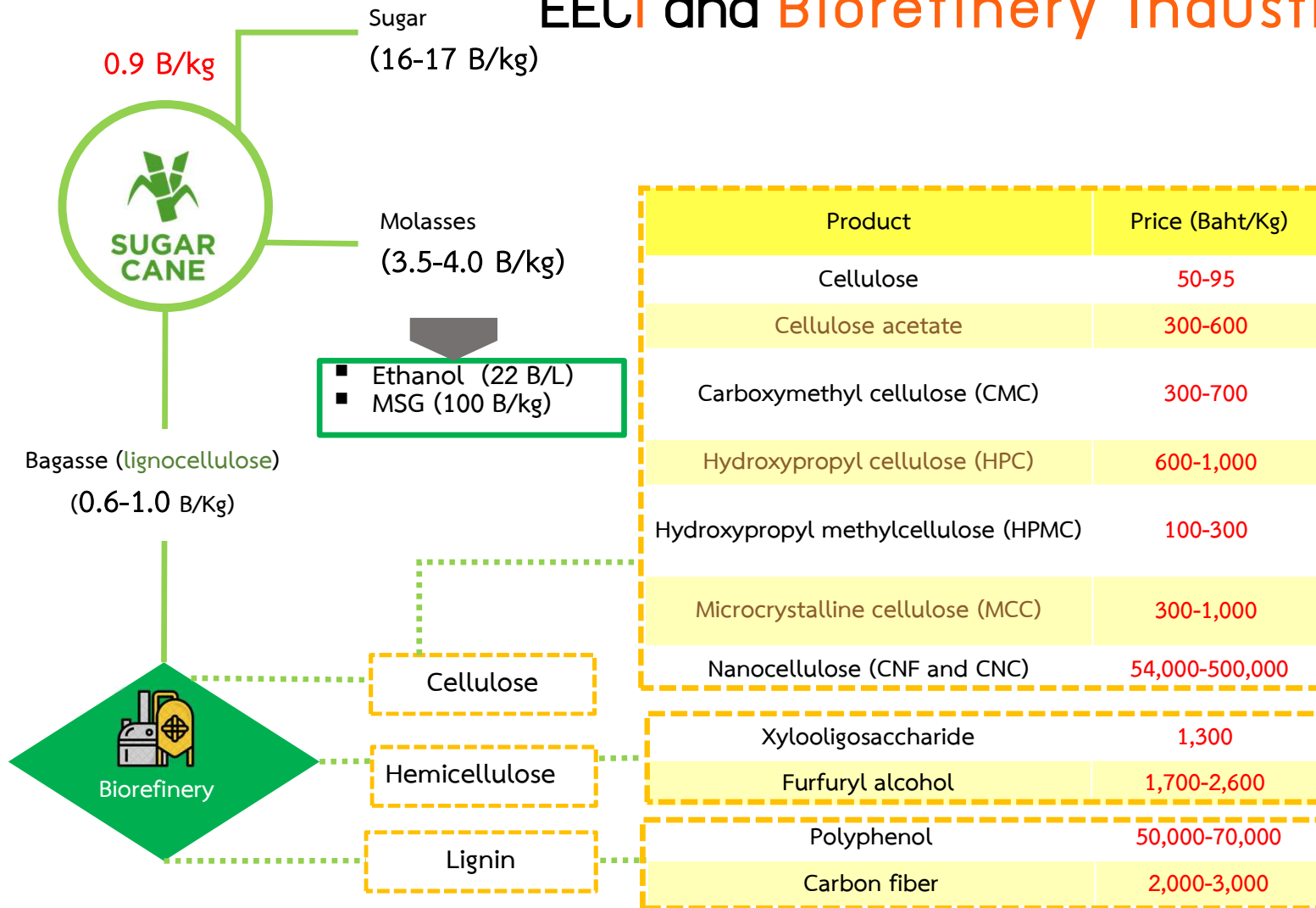
## An Innovation Hub Connecting Research and Investment Across Thailand



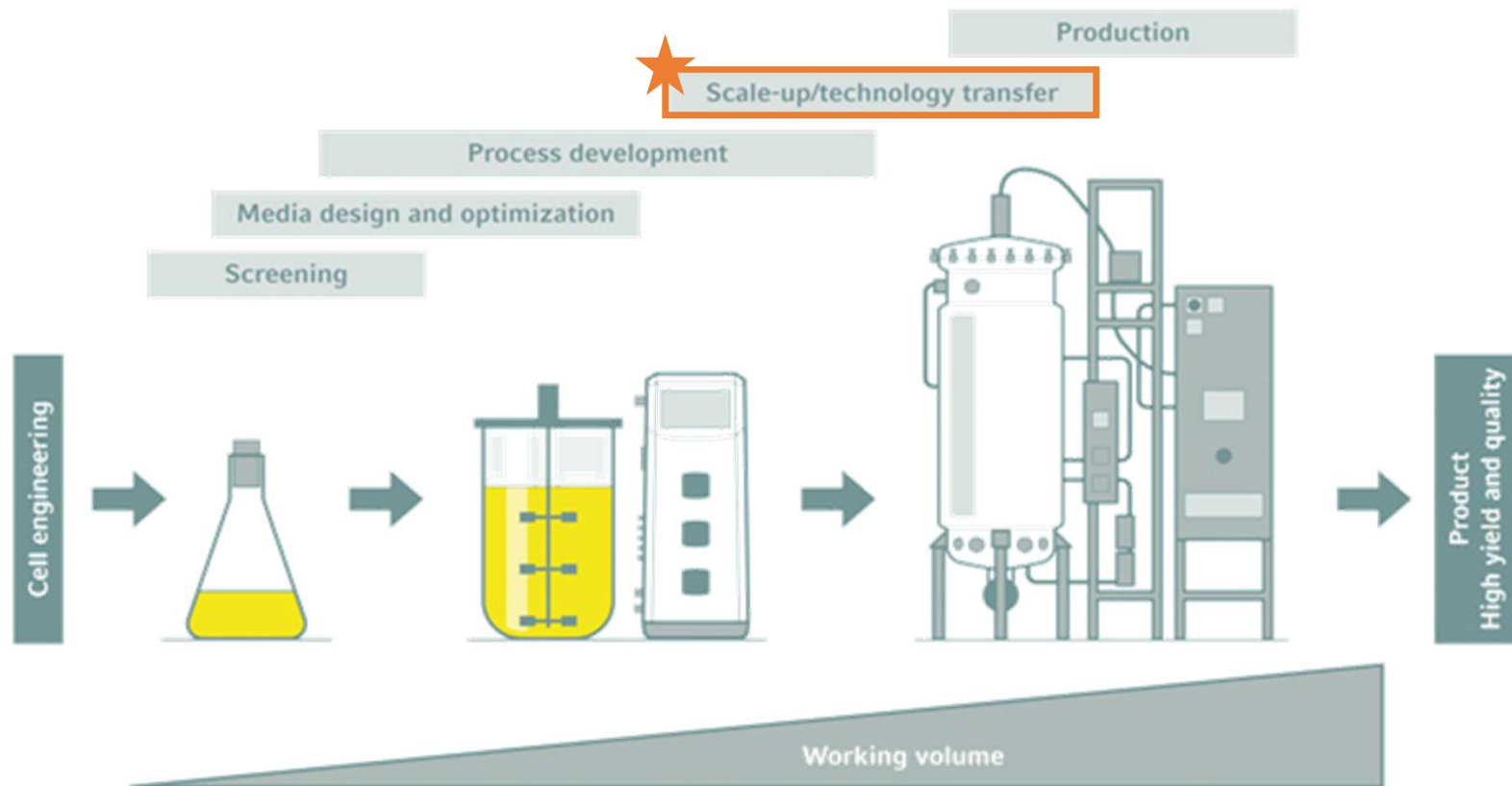
# EECi and Biorefinery Industry



# EECi and Biorefinery Industry



# EECi and Biorefinery Industry



## Comparison of Scale-up Approaches

### Scale-up on *your own self*

High capital investment on the pilot plant

Time-consuming  
(especially pilot plant construction)

Learning and developing upscaling on your own



### Scale-up with **Biorefinery Facility @EECi**

✓ No burden on the pilot plant investment

✓ Can start promptly!

✓ Upscaling with experts

The Biorefinery Facility @EECi will be completed by 2026 (B.E. 2569).